



TM

TM

Cyl'vR



Story and Art by Melissa Barnhill

WWW.J1STUDIOS.COM



A J1 Studios Production

*Story and art by:
Melissa Barnhill*

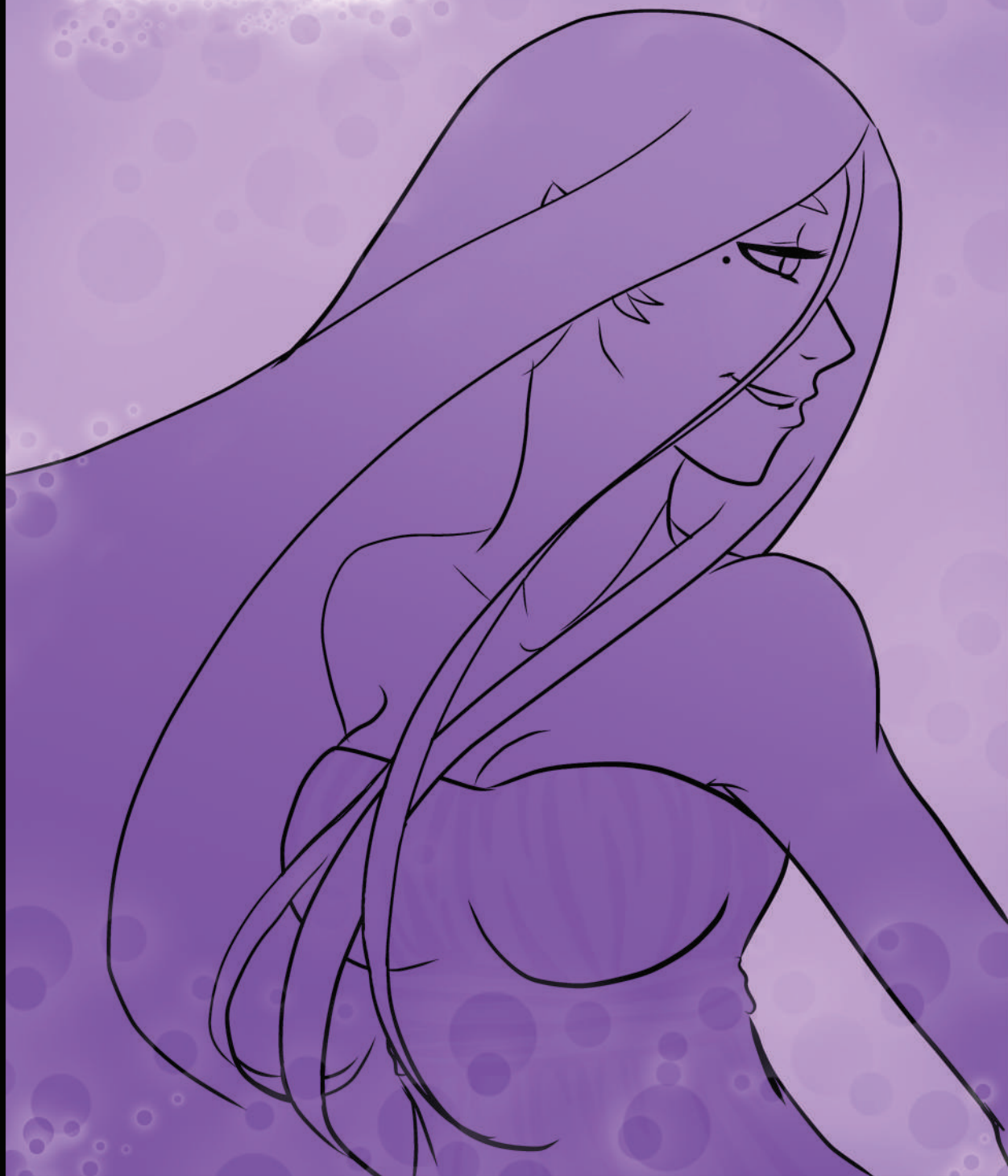
Cyl'vr

and related charcters / designs are © 2013 Melissa Barnhill

*All Rights Reserved. The events, institutions
and characters in this book are fictional. Any resemblance to actual persons
living or dead, is purely coincidental. No portion of this publication may be
produced, by any means without the express written permission
of the copyright holder(s).*

www.j1studios.com

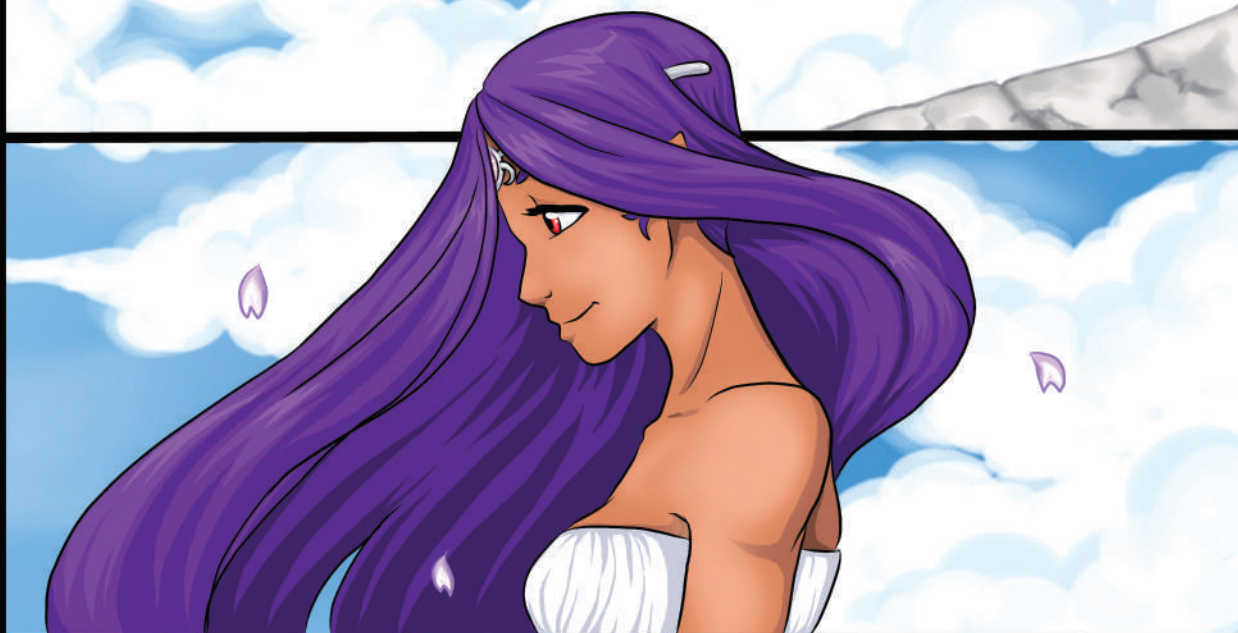
CH1,
A FALLEN DOVE



REALM
OF HEAVEN



In this world
things aren't what
they seem to be.



And the
world
that you
thought you
knew
.....



Can change in a blink of
an eye.
The things you were taught
to be true are false

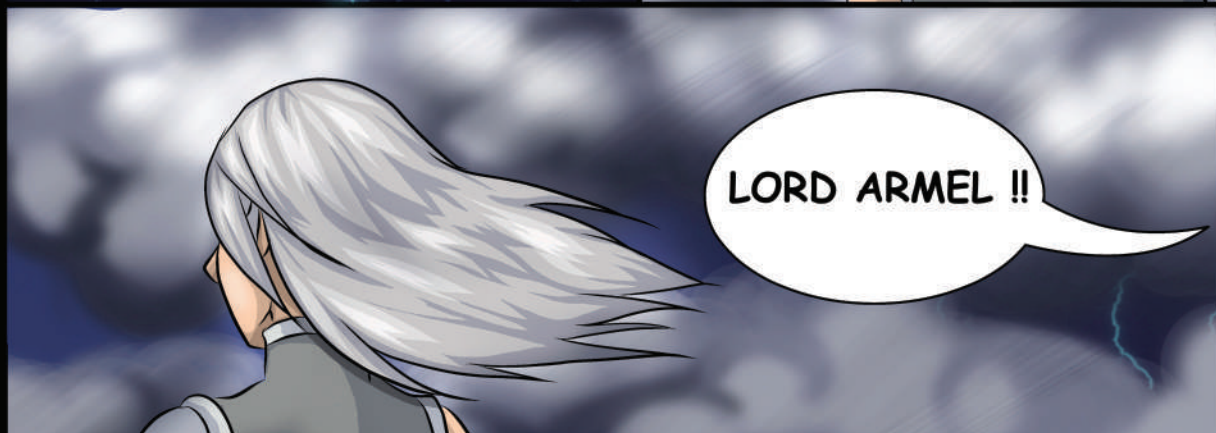
Once reality sinks in
your whole world will change
in an instant...

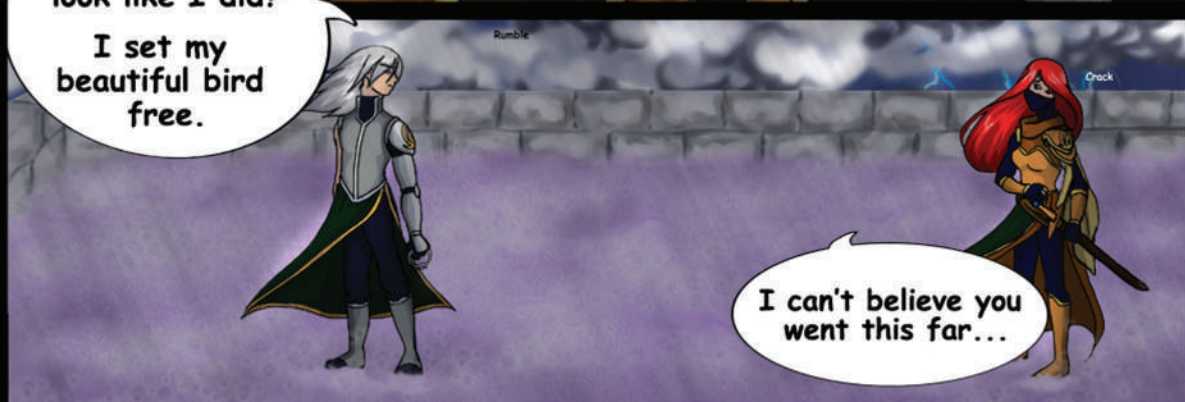
Rumble
Rumble


Rumble
Rumble

Rumble
Rumble

Slide







I thought we
taught you better.

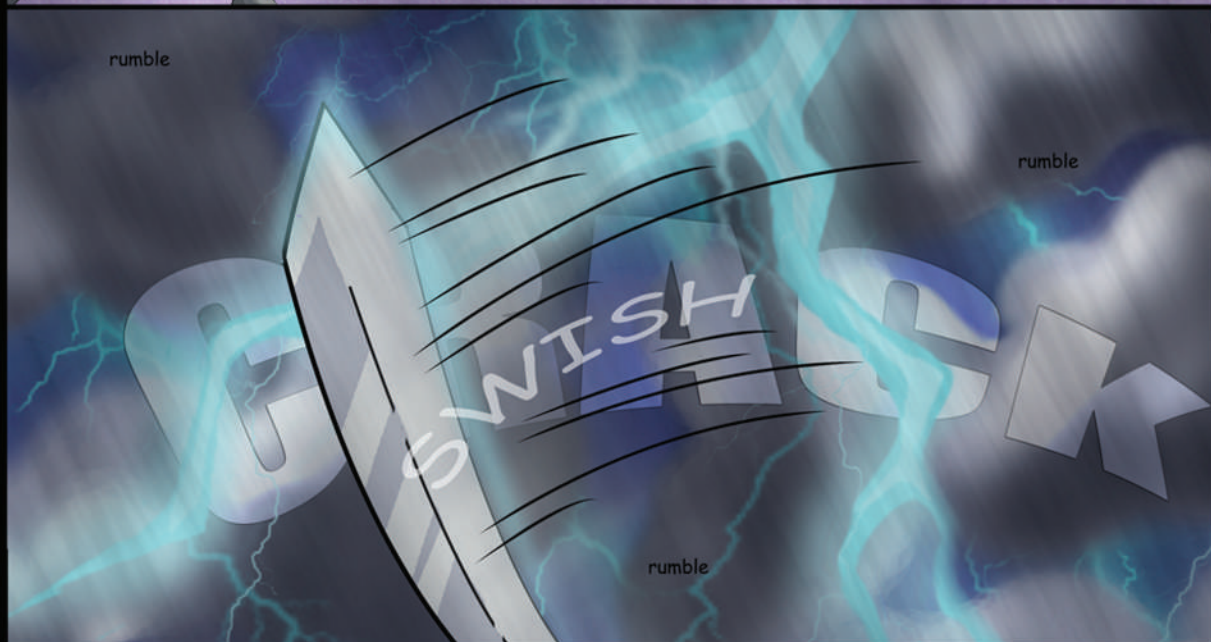
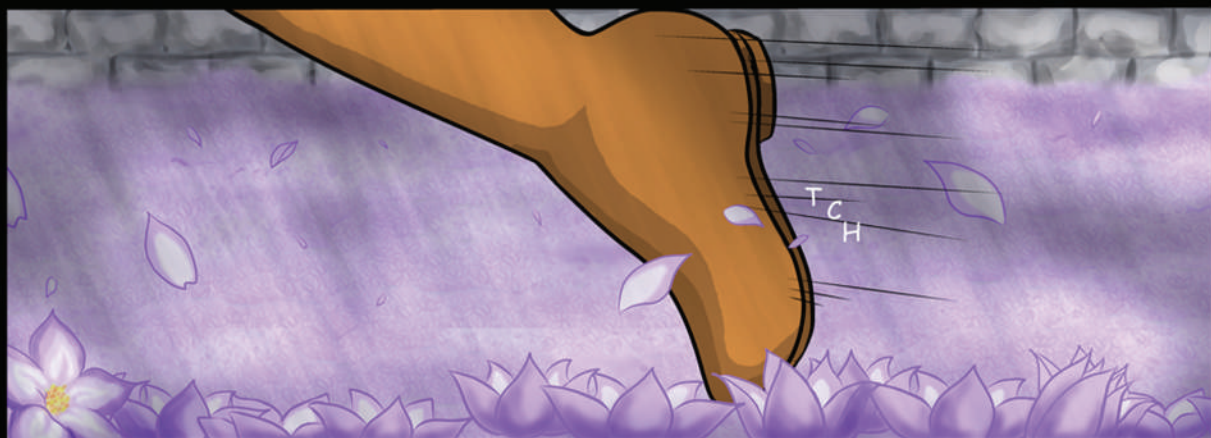
If keeping a
person from their
freedom is
teaching me better

then you're
DELUSIONAL!

You dare question the rules of
heaven and manifest your blade
AGAINST ME!

I am sorry my son
but now you must

FACE JUDGEMENT!!



THE SKY OPENS AND A BEAM OF LIGHT
SUDDENLY TOUCHES THE EARTH.

A dramatic scene with a dark, stormy sky and a bright beam of light shining down on a green field. The word 'RAPA' is written in large, stylized, glowing letters in the center of the beam.

AS THE STORM SETTLES, IT BRINGS A STILLNESS IN THE FOREST BELOW...







I SWEAR
IF THIS IS ANOTHER
ONE OF ODIN'S
TRICKS...
I'M GONNA'BEAT
THE SNOT OUT
OF HIM...

WAA
COME OUT!
YOU POOR EXCUSE
FOR A KITSUNE!

SSSHHHHH
It's...
A GIRL?

PLEASE...

...DON'T
HURT ME!



IT'S OK,
I WON'T HURT
YOU.



ARE YOU OK?

I THINK SO.



I'M
SO SORRY!
I DIDN'T MEAN
TO...



CALM DOWN,
IT'S FINE.
I'M TAKUMI, WHAT'S
YOUR NAME?

I'M....
I'M VALENCIA

YOU
LOOK INJURED.
LET ME TEND TO
YOUR WOUNDS.



WAIT A
MINUTE, ARE YOUR
WOUNDS HEALING...

ON
THEIR OWN?



I DON'T
FEEL SO GOOD...



HEX...
VALENCIA...
WAKE UP.



OH GREAT,
NOW WHAT HAVE
I GOTTEN MYSELF
INTO?

Meanwhile in Heaven, a defeated Armel was brought to the throne of the King of Gods.

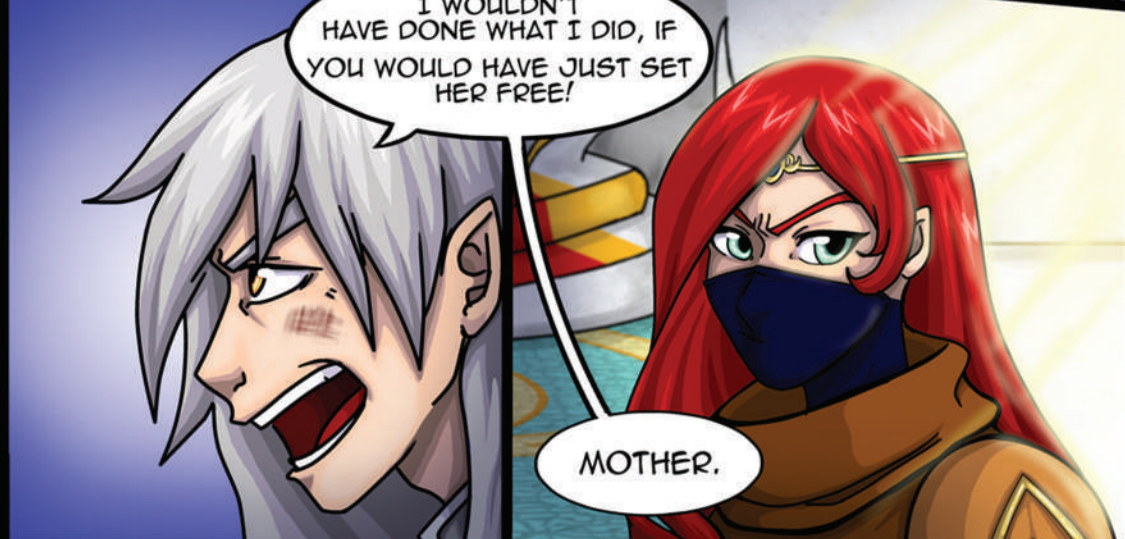
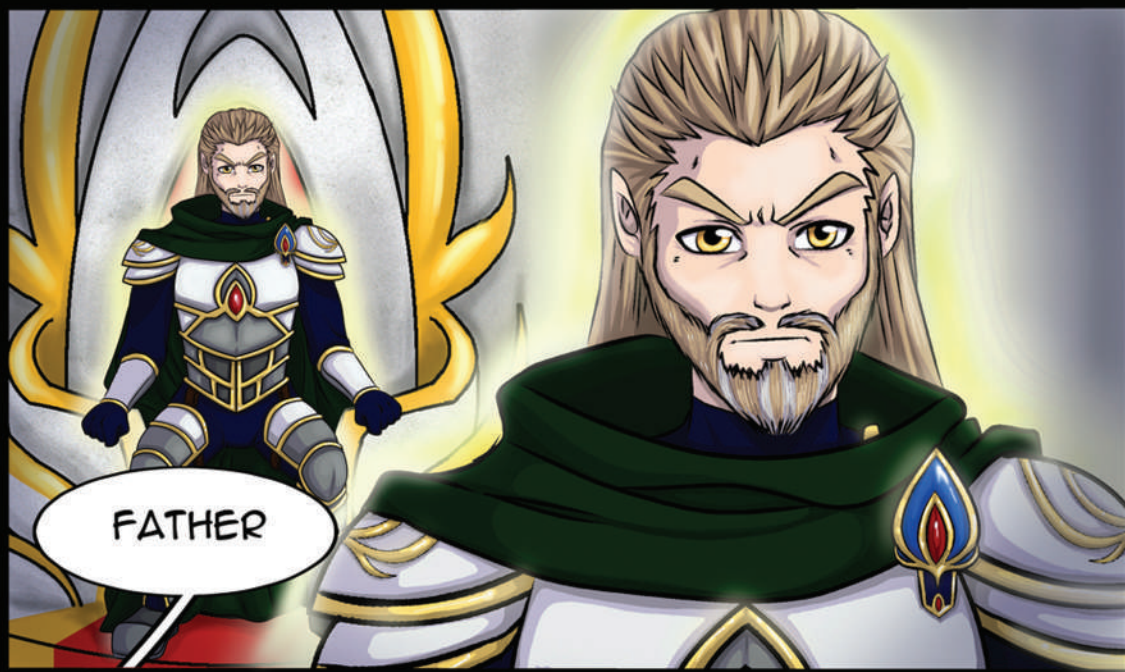
YOUR HIGHNESS,
LADY CRIMSON CAUGHT
THE TRAITOR IN
THE GARDEN.

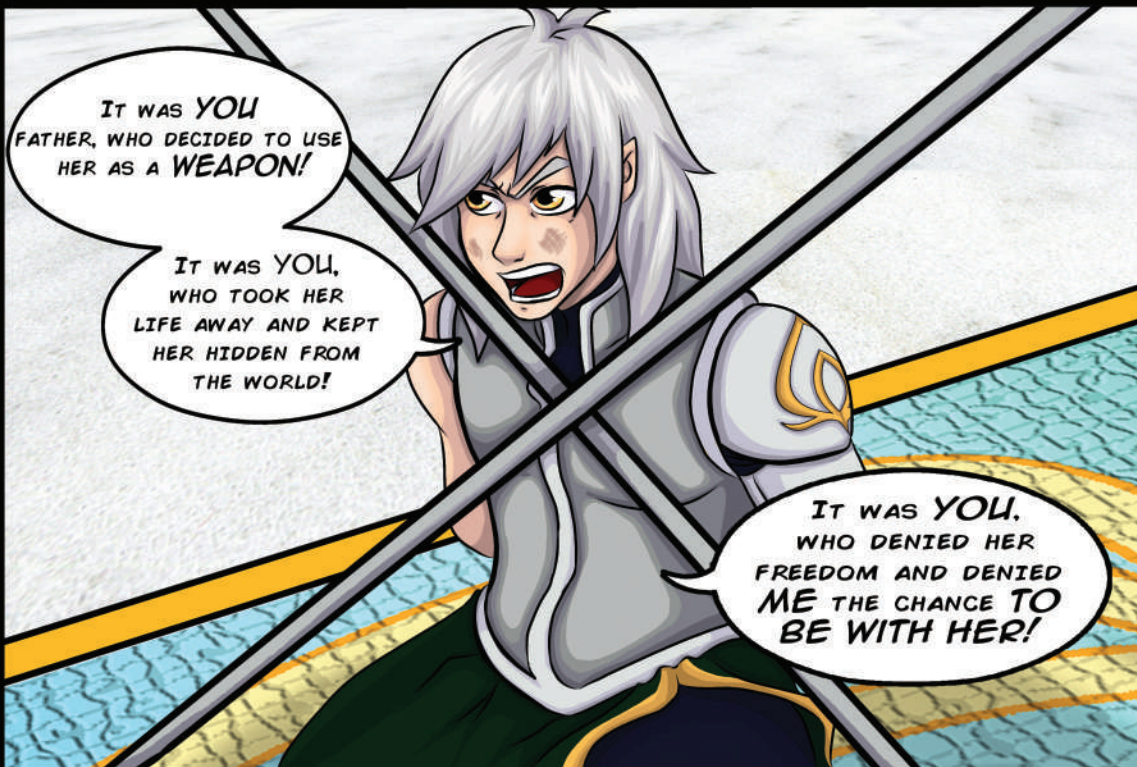
HOWEVER...
HE WAS ABLE TO PUSH
VALENCIA OUT OF HEAVEN.

ARMEL, YOU DARE
TO GO AGAINST MY RULE
AND SET FREE THE STRONGEST
FORCE OF HEAVEN.

I TRUSTED YOU
TO PROTECT HER,
AND THIS IS
WHAT YOU DO!

YOUR RULES
ARE RIDICULOUS!
VALENCIA DESERVES THE RIGHT TO
BE FREE AND TO LIVE HER
OWN LIFE!






IT WAS YOU
FATHER, WHO DECIDED TO USE
HER AS A WEAPON!

IT WAS YOU,
WHO TOOK HER
LIFE AWAY AND KEPT
HER HIDDEN FROM
THE WORLD!

IT WAS YOU,
WHO DENIED HER
FREEDOM AND DENIED
ME THE CHANCE TO
BE WITH HER!



SILENCE!!

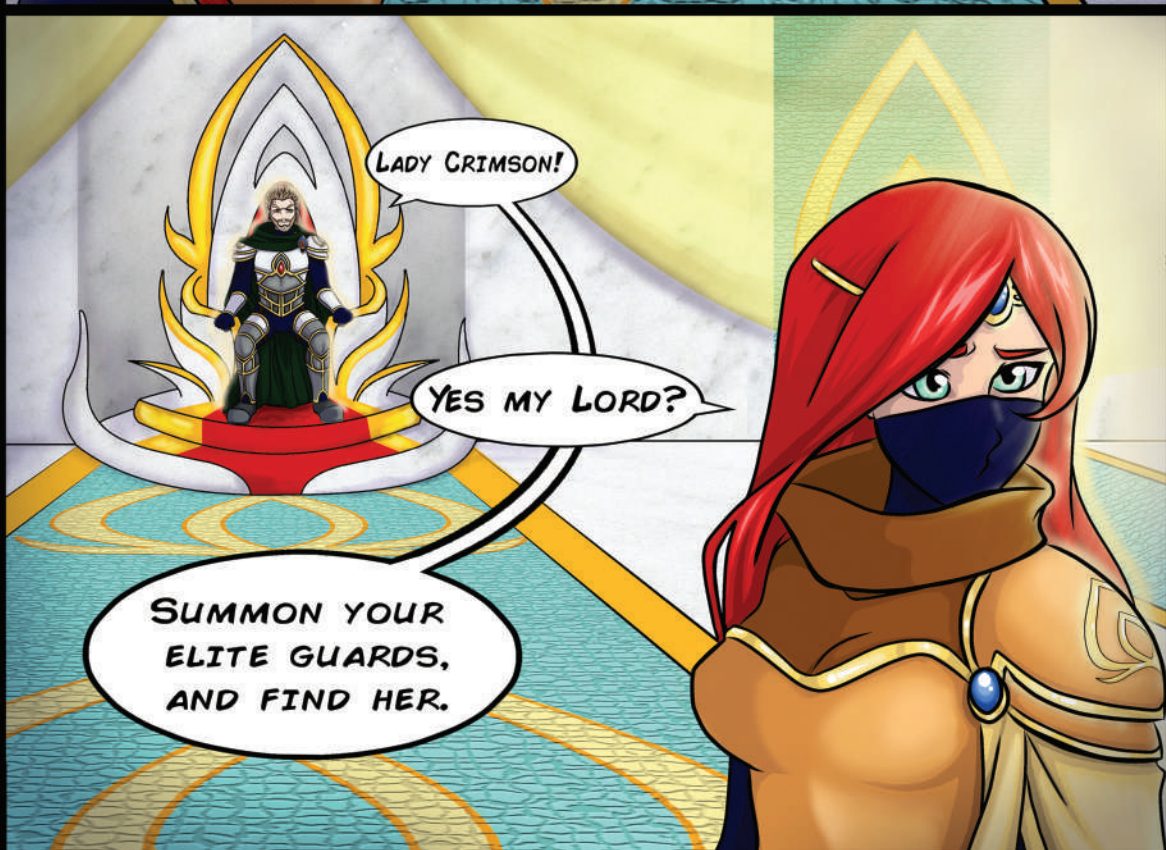


ARMEL YOU ARE
A TRAITOR TO THIS
KINGDOM AND A
DISAPPOINTMENT TO
THIS FAMILY!



AND WITH A
HEAVY HEART I MUST
PASS JUDGEMENT ON YOU.

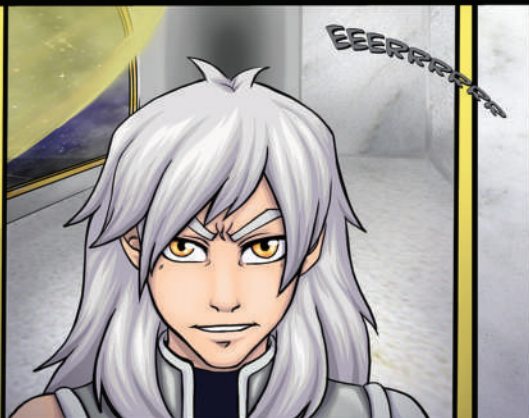
YOUR WINGS SHALL BE
STRIPPED AWAY AND YOU
SHALL BE EXILED INTO
DARKNESS FOREVER.



EVERY GOD FEARS JUDGEMENT BECAUSE
NO GOD IS IMMORTAL.



EEERRRRRR

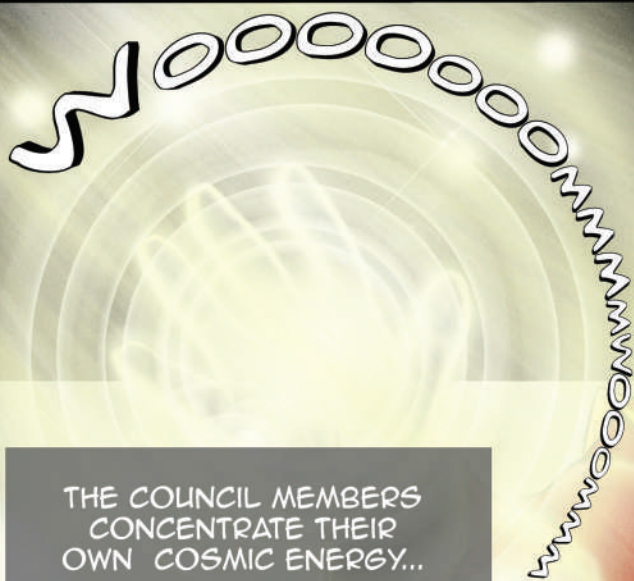


THOSE WHO
HAVE BEEN JUDGED BY
THE KING OF GODS ARE
TAKEN TO A ROOM AND
THEIR COSMIC ENERGY
IS SEVERED FROM
THEIR ORGANIC BODIES.
THIS PROCESS IS
PERFORMED BY THE
HIGH COUNCIL .

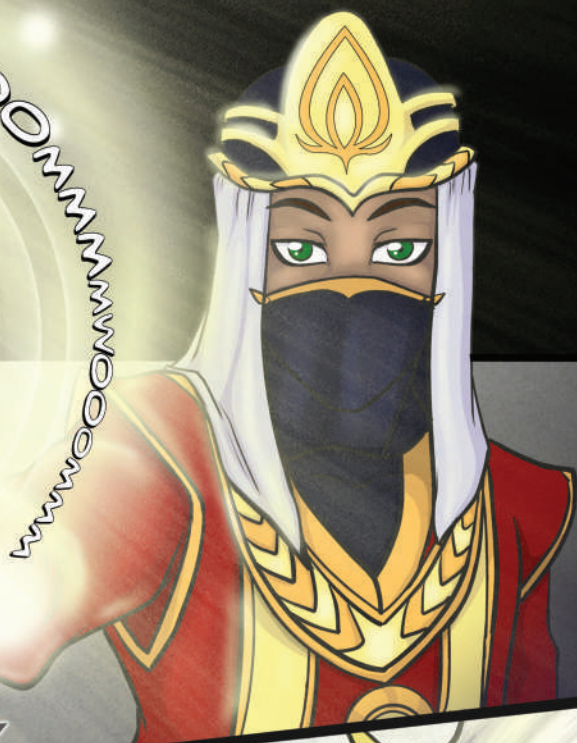


THE CRIMINAL IS CHAINED
DOWN TO A RITUAL TABLE
AND THE HIGH COUNCIL
PREPARES THE CRIMINAL
FOR THEIR JUDGEMENT.






THE COUNCIL MEMBERS
CONCENTRATE THEIR
OWN COSMIC ENERGY...



...TO TRIGGER...

...AND FORCE OUT THE
CRIMINAL'S COSMIC POWER.





THIS POWER CONVERGES
TO THE FORM OF WINGS.
THE LIGHT THAT RADIATES
FROM IT IS THE GODS
LIFE FORCE.

ONCE THIS
COSMIC ENERGY
IS FORCED OUT.



THE COUNCIL USE THEIR
COMBINED ENERGY TO
SHATTER THE CONNECTION


...



THE SHARDS OF COSMIC
ENERGY ARE THEN
EMBEDDED INTO THE
BACK OF THE CRIMINAL.

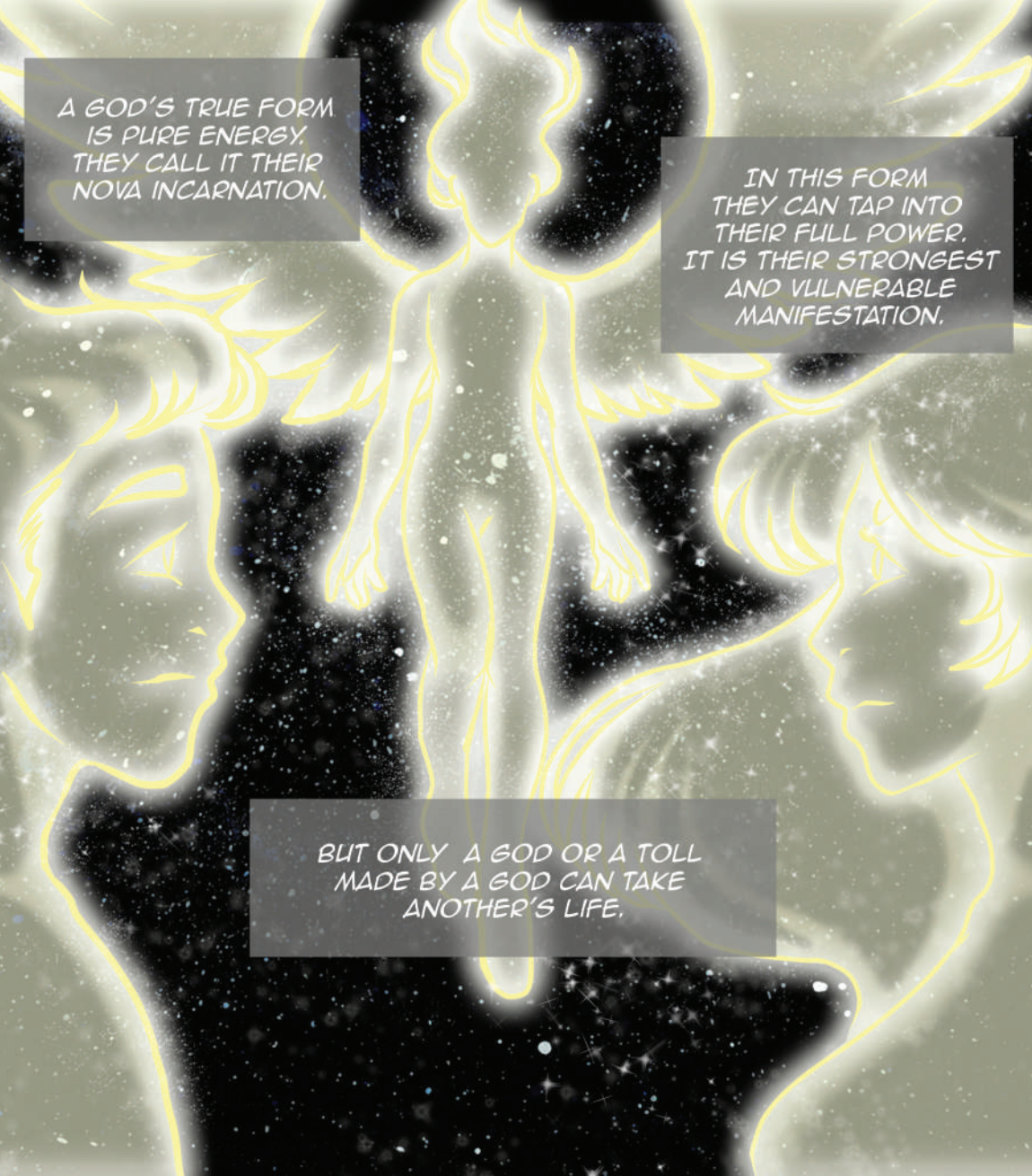


SEALING THEIR
COSMIC POWER INTO
THE MORTAL FORM
THAT THEY ARE IN.



ONCE A GOD IS
CONDEMNED IN
THIS WAY
...

THEY LOSE THEIR
ABILITY TO CONNECT
WITH THEIR TRUE FORM.



A GOD'S TRUE FORM
IS PURE ENERGY.
THEY CALL IT THEIR
NOVA INCARNATION.

IN THIS FORM
THEY CAN TAP INTO
THEIR FULL POWER.
IT IS THEIR STRONGEST
AND VULNERABLE
MANIFESTATION.

BUT ONLY A GOD OR A TOLL
MADE BY A GOD CAN TAKE
ANOTHER'S LIFE.



ONCE A GOD IS KILLED THEIR NOVA INCARNATION BECOMES
A STAR. ONCE THAT STAR BURNS OUT THEY ARE REBORN AGAIN.

BUT WHEN A GOD
IS CONDEMNED AND
THEIR NOVA CONNECTION
IS SHATTERED AND
EMBEDDED INTO
THEIR VESSEL,

THE CONNECTION TO
BE REBORN IS SEVERED.
IT STAYS SEVERED AS
LONG AS THE REIGNING
KING OF GODS CREST
IS BRANDED ON TO
THEIR BODY.



***THANK YOU
FOR ENJOYING
OUR PREVIEW!***

J1 STUDIOS
THE ENTERTAINMENT HUB FOR GEEKS
J1STUDIOS.COM